



Peter 4:10 'God has given you gifts. Use them well to serve one another.'

How The Littletons School Supports the Progress of Children with Special Educational Needs and Disabilities

Who is our SEND Co-ordinator?

Mrs. Nicky Felton is the SEND Co-ordinator and works closely with all members of staff and other professional agencies to support all children with Special Educational Needs and Disabilities.

What kinds of SEND are provided for at The Littletons?

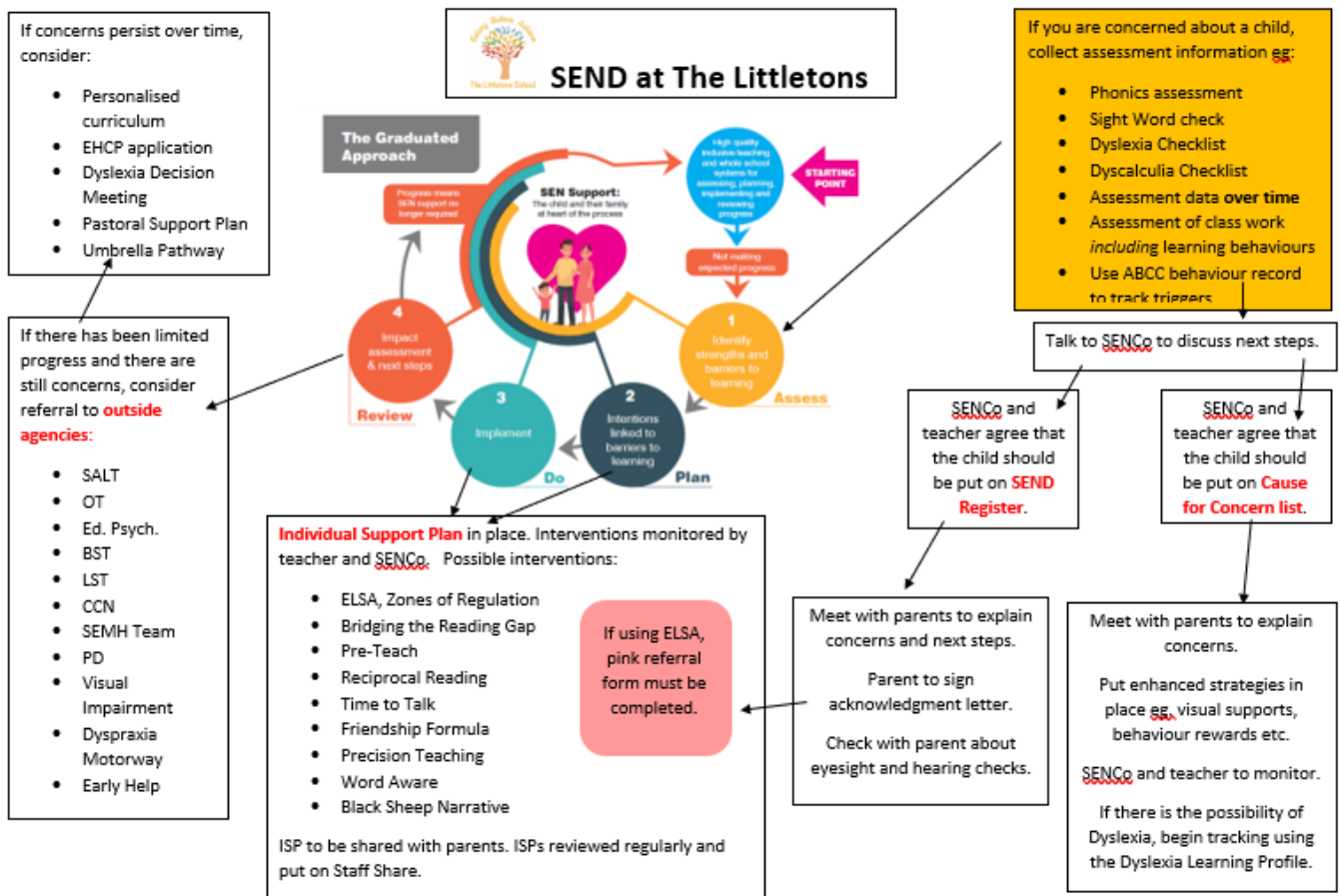
We are able to support children with a wide range of Special Needs. We have experience of providing for children with ADHD, Autism, Speech and Language difficulties, Cerebral Palsy, Dyslexia, Pathological Demand Avoidance Syndrome (PDA), hearing difficulties, Selective Mutism, Diabetes, Epilepsy, general learning and behavioural difficulties and emotional and social needs. We are also able to support children with a wide range of mobility difficulties.

How does the school know if children have a Special Educational Need or Disability and how will I be contacted about this?

Children who display difficulties within school are monitored over a period of time to enable high quality teaching, rigorous differentiation and intervention programmes to address any difficulties before a decision about SEN status is needed. We then use a wide range of assessment evidence* to 'build a picture' of the difficulties a particular child is facing. These assessments form the basis of our decision about whether the child should be identified as having a special need. You will be informed of our concerns early in the process as you will be able to share valuable knowledge of your child, such as whether your child displays similar difficulties at home. Regular updates and meetings will occur before a final decision about SEN status is made.

*This includes classroom and playground observations, assessment notes from intervention programmes, independent work that shows what a child can do when working on their own, levels achieved in tests, anecdotal evidence about pupil attitudes, work produced in lessons, checklists for learning difficulties such as Dyslexia.

The diagram below shows the procedures followed by school staff when identifying children with SEND.



What should I do if I think my child has Special Educational Needs (SEN)?

The first thing that you should do is speak to your child's class teacher so that you can gather more information about what your child is like in the school environment. During this discussion, the teacher will be able to talk about your concerns and make suggestions for any next steps.

How will the curriculum be matched to my child's needs and how will that help my child?

Differentiation is how teachers teach children of different ability levels in the same class. At The Littletons, differentiation can be through assigning increased adult support to a particular child or group of children, giving children adapted tasks or by giving a task that can be accessed by all children where they perform at varying levels. There are also many other ways of reducing barriers to learning such as using **different methods of recording** such as the use of ICT, the use of **task management boards** to ensure pupils know what to do e.g. photos/symbols used as visual checklist of equipment needed, stages of practical activity; steps in everyday routines and giving children **particular resources** to help them access lessons independently.

Who will oversee, plan and work with my child and how often? Who will explain this to me?

Your child's class teacher will plan all the work for your child. Sometimes your child might work in a small group, or individually, with a teaching assistant on a specific programme of work or to go over work that they may not have understood in class. The teaching assistant will report back to the class teacher who will then plan the next steps for your child's learning. If your child is working on a specific scheme of work, then this might happen quite regularly during the week. If they need some extra input to reinforce what was being taught, then this will happen when the need arises. The class teacher will discuss any specific support your child may be having, and the regularity of this intervention, at Parents' Evening or through informal discussions.

How is the decision made about what type and how much support my child will receive?

The decision is made by the class teacher in conjunction with Mrs. Felton (SENDCo) and Mr. Jones (Head Teacher). Intervention programmes are very specific and need to be matched carefully to the needs of each pupil. Sometimes intervention is delivered by teaching staff with additional programmes run by experienced teaching assistants. It is important that additional work is seen as a positive way of enabling children to make progress and reach expected levels of attainment.

How does the school know how well my child is doing and how is my child involved?

School is able to track your child's progress through regular assessment of their work, responses in class and performance in test situations. This process is ongoing and monitored by Mr. Jones.

There are targets for each English and Maths unit and pupils can clearly see what they are working on by looking at this target sheet. As they move through the school, the children become more responsible for their own learning and the teachers have regular discussions with the children about their progress and what they need to do next.

How will I know how my child is doing and how will you help me to support my child's learning?

There are many opportunities to find out how your child is doing in school. There are Parents' Evenings in the autumn and spring terms which give you the chance to discuss your child's progress, targets and how you can support your child's learning. Record of Achievement reports are sent out in the same two terms with an annual report sent home at the end of the summer term. If requested, teachers also offer regular meetings with parents so that you can be fully informed about your child's progress.

If your child has an Education, Health and Care Plan (EHCP), you will be involved closely with school staff. Your child will also have an Annual Review to discuss progress, targets and recommendations for the next academic year.

What training have staff had to help them support children with SEND?

Staff regularly participate in further training in all areas of the curriculum. Teachers and teaching assistants have taken part in a range of training including Precision Teaching, Read, Write Inc, Numicon, Word Aware, Triple P Parenting support and Speech and Language training.

What specialist services and expertise are available at, or accessed by, the school?

When further professional input is needed, we are able to involve Speech and Language Therapy, Behaviour Support Team, Learning Support Team, the Physical Disabilities Team and our Educational Psychologist. We also liaise with CAMHS (Child and Adolescent Mental Health Service), Physiotherapy, Occupational Therapy, the school nurse and the community paediatrician. We have also purchased support from Chadsgrove School Support Services which will give us access to a range of professional guidance.

If you are having difficulties as a family, we can also refer to Early Help who will support you at home with some visits into school if appropriate. Please see our Early Help offer on the website for more information.

When professionals visit, they will often meet with parents, observe the child in class, undertake assessment tasks with the child on a 1:1 basis and meet with key members of staff. They will often write a

report and contact parents by telephone to discuss their findings. They will often make recommendations for further work.

What if my child has been affected by the Covid-19 Pandemic? How will they be supported?

Some children who have SEND may need an increased level of additional support to help them make progress in light of the disruption to school. Some children, who have not previously been identified as having SEND, may also need some extra help if their gaps in learning persist or if they have emotional needs related to the pandemic. These difficulties will be discussed with Mrs. Felton and a plan will be put in place to support your child. This will be done in conjunction with you but if you feel there are issues that school does not know about, please contact your child's class teacher to discuss them.

What support will there be for my child's overall wellbeing?

What is the pastoral, medical and social support available in the school?

The Littletons School is an extremely caring school that values a nurturing approach for all of our children. We have a very inclusive ethos where all children are valued and those who are most vulnerable are offered additional support to help them participate fully in school life, to find and develop skills and talents, and to raise their self-esteem and aspirations for the future. We have many teaching assistants who build positive relationships with children who are vulnerable. We offer structured play opportunities at break and lunchtimes to help children behave appropriately in a social environment. Several members of staff have first aid qualifications and have been trained to support children with diabetes and epilepsy.

We also have a trained teaching assistant who runs our ELSA programme. This is a programme that supports children's emotional and mental health and can be accessed by children who are dealing with bereavement, a breakdown of family relationships, difficulties with friendships, managing their anger or anxiety.

What support is there for behaviour, avoiding exclusion and increasing attendance?

Children who have behavioural difficulties are managed on an individual basis in conjunction with the family. A variety of options are available to help improve low level behaviour. If the child's behaviour does not improve, a Pastoral Support Plan can be used for those children at risk of exclusion. This involves regular discussions about how the child's behaviour is improving and particular targets that the child is working on.

If you are having difficulties getting your child to school, it is important that you speak to a member of staff so that we can help you to increase your child's attendance. We work closely with the Education Welfare Officer for those children who are persistently absent from school.

How accessible is the school environment?

School has an Access Plan to make sure that the school buildings and grounds are accessible to all members of the school community. We have taught a number of children with mobility issues and we are equipped to manage children who have limited mobility.

How will my child be included in activities outside the classroom including school trips?

All trips are designed to accommodate all children. Certain steps can be taken to enable all children to participate. When needed, additional adults will go on the trip to provide more individual support. This is particularly relevant during swimming lessons. Risk assessments are carried out to ensure that activities are safe and to make sure that difficulties particular to a certain child are considered. If your child demonstrates challenging behaviour, you may be invited to join your child on the trip to help them participate and to be included in the visit.

How will the school prepare and support my child when joining the school and transferring to a new school?

Induction into Reception – As part of the induction process, your child will have a series of visits into their new Reception class to meet their teacher and become familiar with the classroom environment. There is also a meeting for parents to pass on important information. A staggered start to the autumn term is planned to help children settle in to their new class.

Transfer to Middle School – Your child will participate in transition visits to their new school, these may include visits from middle school staff to The Littletons, sports events and other events and activities. Additional small group visits can also be arranged for those children who may find the transition to a new school more challenging. Staff from the middle school liaise closely with us so that they are aware of each child's strengths and areas of need.

Who should I contact if I am considering whether my child should join the school?

Telephone the school office on 01386 830695. Mrs Lisa Huskisson is our School Administrator and will forward your enquiry to Mr Jones, our Head Teacher. You are welcome to visit the school and meet school staff. If your child has a special need, then the SENDCo can be available to discuss any concerns you may have. Also check our website to find out what happens at our school.

How do I find the Local Authority's Local Offer?

If you go to https://www.worcestershire.gov.uk/info/20416/send_local_offer you will find a link to the Local Authority's Local Offer.

How will I raise concerns if I need to? How do I make a complaint?

Your first step should be to talk to your child's class teacher as they have in depth knowledge of your child and their strengths and areas of difficulty. If you feel that you would like to discuss your concerns further, then you should contact Mrs. Felton (SENDCo) or Mr. Jones (Head Teacher).